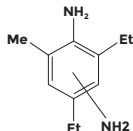


ETHACURE® DETDA

DESCRIPTION



Diethyltoluenediamine is an effective extender for polyurethane elastomers, particularly in RIM applications. Other uses are as curing agent for polyurethanes and epoxies; antioxidant for elastomers, lubricants and industrial oils; and as a chemical intermediate.

TYPICAL COMPOSITION

3,5-Diethyltoluene-2,4-diamine, %	75.5-81.0
3,5-Diethyltoluene-2,6-diamine, %	18.0-20.0
Dialkylated m-phenylenediamines, %	0.5 - 3.0
Other trialkylated m-phenylenediamines, %	0.0 - 0.4
2,4,6-triethylbenzene, 1,3-diamine, %	0.0 - 0.1

TYPICAL PROPERTIES

Appearance	clear, amber liquid *
Molecular weight	178.28
Boiling point, °C (°F)	308 (586)
Density at 20°C, g/mL	1.022
Density at 20°C, lbs/gal	8.50
Pour point, °C (°F)	-9 (15)
Flash point, TCC, °C (°F)	135 (>275)
Viscosity at 20°C, centistokes	280
Viscosity at 25 °C, centistokes	155
Solubility	
Ethanol	Miscible
Toluene	Miscible
Water	1.0

An asterisk (*) indicates that this will darken with time and exposure to air.

SHIPPING INFORMATION

Container sizes:

Tank cars
Tank trailers
Drums: 5-gallon and 55-gallon, non-returnable, steel

Shipping classification:

U.S. DOT: not regulated in transportation
IMCO or ICAO: Class 9

Other information:

U.S. TSCA Chemical Inventory Number: CAS 68479-98-1

SAFETY AND HANDLING INFORMATION

Before handling or using this product, the material safety data sheet should be read and understood. This can be obtained from your Ketjen sales representative.



NORTH AMERICA 4350 Congress Street, Suite 700 • Charlotte, North Carolina 28209 • Tel: +1 980 299 5700

EUROPE Industriepark Höchst, Gebäude G 879, 5926 Frankfurt am Main, Germany • Tel: +49 69 40 12 60

LATIN AMERICA Isidora Goyenechea Nro. 3162, Oficina 202, Las Condes • Santiago, Chile • Tel: +56-55-2351008

ASIA PACIFIC Albemarle Management (Shanghai) Co. Ltd. • Building 6, A-Sun Science & Technology Park, Lane 399 Shengxia Road
Pudong, Shanghai 201210, China • Tel: +86-21-6103-8666

SINGAPORE: 30 Cecil Street, Gopher Center, #28-05 • 08 Prudential Tower • Singapore 049712 • Tel: +65.6424.8400

The information presented herein is believed to be accurate and reliable, but is presented without guarantee or responsibility on the part of Ketjen and its subsidiaries to ensure the accuracy or reliability of the information. It is the responsibility of the user to comply with all applicable laws and regulations and to provide for a safe workplace. The user should consider all information contained herein only as a guide, and should take precautions that the user considers necessary or prudent to promote a safe work environment, such as considering all applicable health and safety hazards, developing safe work practice procedures and properly instructing employees. Further, nothing contained herein shall be taken as an inducement or recommendation to manufacture or use any of the materials or processes mentioned herein in violation of existing or pending patents.